

GPCPD1 Polyclonal Antibody

Catalog No. E-AB-19087

Note: Centrifuge before opening to ensure complete recovery of vial contents.

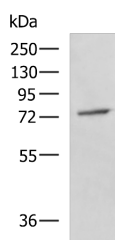
Description

| | |
|---------------------|---|
| Reactivity | Human, Mouse, Rat |
| Immunogen | Fusion protein of human GPCPD1 |
| Host | Rabbit |
| Isotype | IgG |
| Purification | Antigen affinity purification |
| Conjugation | Unconjugated |
| Buffer | PBS with 0.05% NaN ₃ and 40% Glycerol, pH7.4 |

Applications Recommended Dilution

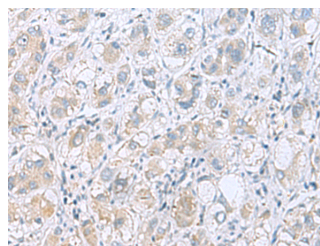
| | |
|------------|--------------|
| WB | 1:500-1:2000 |
| IHC | 1:50-1:100 |

Data

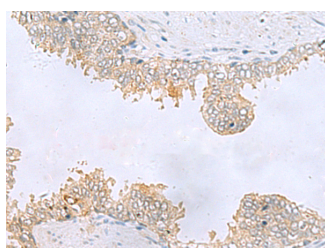


Western blot analysis of A549 cell lysate using GPCPD1 Polyclonal Antibody at dilution of 1:800

Observed Mw: Refer to figures
Calculated Mw: 76 kDa



Immunohistochemistry of paraffin-embedded Human liver cancer tissue using GPCPD1 Polyclonal Antibody at dilution of 1:55 (x200)



Immunohistochemistry of paraffin-embedded Human prostate cancer tissue using GPCPD1 Polyclonal Antibody at dilution of 1:55 (x200)

Preparation & Storage

Storage Store at -20°C. Avoid freeze / thaw cycles.

For Research Use Only

Background

May be involved in the negative regulation of skeletal muscle differentiation, independently of its glycerophosphocholine phosphodiesterase activity.