

GPCPD1 Polyclonal Antibody

Catalog Number:E-AB-19087

Note: Centrifuge before opening to ensure complete recovery of vial contents.

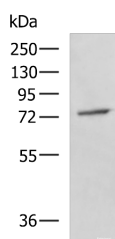
Description

Reactivity	Human, Mouse, Rat
Immunogen	Fusion protein of human GPCPD1
Host	Rabbit
Isotype	IgG
Purification	Antigen affinity purification
Conjugation	Unconjugated
Formulation	PBS with 0.05% NaN ₃ and 40% Glycerol,pH7.4

Applications Recommended Dilution

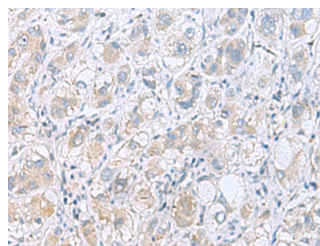
WB	1:500-1:2000
IHC	1:50-1:100
ELISA	1:5000-1:10000

Data

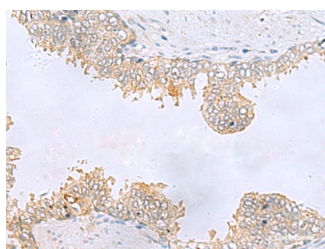


Western blot analysis of A549 cell lysate using GPCPD1 Polyclonal Antibody at dilution of 1:800

Observed Mw:Refer to figures
Calculated Mw:76 kDa



Immunohistochemistry of paraffin-embedded Human liver cancer tissue using GPCPD1 Polyclonal Antibody at dilution of 1:55(×200)



Immunohistochemistry of paraffin-embedded Human prostate cancer tissue using GPCPD1 Polyclonal Antibody at dilution of 1:55(×200)

Preparation & Storage

Storage Store at -20°C. Avoid freeze / thaw cycles.

Background

May be involved in the negative regulation of skeletal muscle differentiation, independently of its glycerophosphocholine

For Research Use Only

A Reliable Research Partner in Life Science and Medicine

Toll-free: 1-888-852-8623

Web: www.elabscience.com

Tel: 1-832-243-6086

Email: techsupport@elabscience.com

Fax: 1-832-243-6017

GPCPD1 Polyclonal Antibody

Catalog Number: E-AB-19087



phosphodiesterase activity.

For Research Use Only

A Reliable Research Partner in Life Science and Medicine

Toll-free: 1-888-852-8623

Web: www.elabscience.com

Tel: 1-832-243-6086

Email: techsupport@elabscience.com

Fax: 1-832-243-6017