

**Note:** Centrifuge before opening to ensure complete recovery of vial contents.

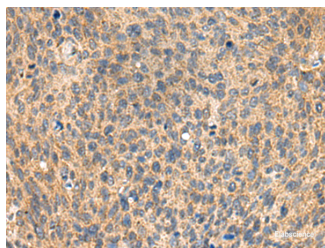
## Description

<b>Reactivity</b>	Human, Mouse, Rat
<b>Immunogen</b>	Fusion protein of human MIA
<b>Host</b>	Rabbit
<b>Isotype</b>	IgG
<b>Purification</b>	Antigen affinity purification
<b>Conjugation</b>	Unconjugated
<b>Formulation</b>	PBS with 0.05% NaN <sub>3</sub> and 40% Glycerol,pH7.4

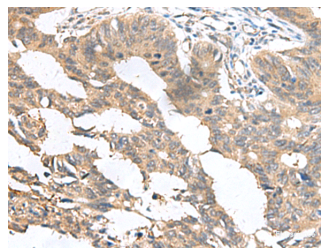
## Applications Recommended Dilution

<b>IHC</b>	1:100-1:300
<b>ELISA</b>	1:5000-1:10000

## Data



Immunohistochemistry of paraffin-embedded Human cervical cancer tissue using MIA Polyclonal Antibody at dilution of 1:100(×200)



Immunohistochemistry of paraffin-embedded Human colorectal cancer tissue using MIA Polyclonal Antibody at dilution of 1:100(×200)

## Preparation & Storage

<b>Storage</b>	Store at -20°C. Avoid freeze / thaw cycles.
----------------	---------------------------------------------

## Background

MIA (Melanoma Inhibitory Activity) is a Protein Coding gene. Diseases associated with MIA include Melanoma and Skin Melanoma. Among its related pathways are Neural Crest Differentiation. GO annotations related to this gene include growth factor activity. An important paralog of this gene is MIA-RAB4B.

## For Research Use Only

A Reliable Research Partner in Life Science and Medicine

Toll-free: 1-888-852-8623

Web: [www.elabscience.com](http://www.elabscience.com)

Tel: 1-832-243-6086

Email: [techsupport@elabscience.com](mailto:techsupport@elabscience.com)

Fax: 1-832-243-6017