

RPL18 Polyclonal Antibody

Catalog No. E-AB-19152

Note: Centrifuge before opening to ensure complete recovery of vial contents.

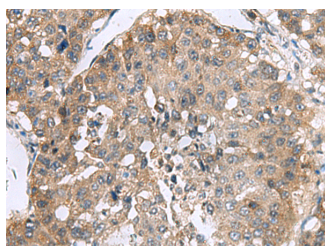
Description

Reactivity	Human, Mouse, Rat
Immunogen	Fusion protein of human RPL18
Host	Rabbit
Isotype	IgG
Purification	Antigen affinity purification
Conjugation	Unconjugated
Buffer	PBS with 0.05% NaN ₃ and 40% Glycerol, pH7.4

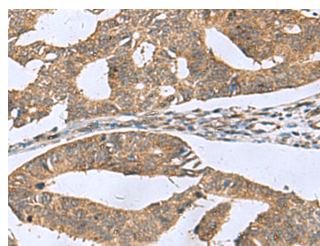
Applications Recommended Dilution

IHC 1:50-1:200

Data



Immunohistochemistry of paraffin-embedded Human liver cancer tissue using RPL18 Polyclonal Antibody at dilution of 1:70(x200)



Immunohistochemistry of paraffin-embedded Human colorectal cancer tissue using RPL18 Polyclonal Antibody at dilution of 1:70(x200)

Preparation & Storage

Storage Store at -20°C. Avoid freeze / thaw cycles.

Background

Ribosomes, the organelles that catalyze protein synthesis, consist of a small 40S subunit and a large 60S subunit. Together these subunits are composed of 4 RNA species and approximately 80 structurally distinct proteins. This gene encodes a member of the L18E family of ribosomal proteins that is a component of the 60S subunit. As is typical for genes encoding ribosomal proteins, there are multiple processed pseudogenes of this gene dispersed through the genome. Alternatively spliced transcript variants encoding multiple isoforms have been observed for this gene.

For Research Use Only