

## CSR2 Polyclonal Antibody

**Catalog No.** E-AB-19155

*Note:* Centrifuge before opening to ensure complete recovery of vial contents.

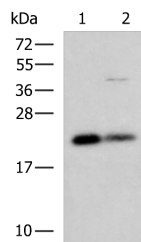
### Description

<b>Reactivity</b>	Human, Mouse, Rat
<b>Immunogen</b>	Fusion protein of human CSR2
<b>Host</b>	Rabbit
<b>Isotype</b>	IgG
<b>Purification</b>	Antigen affinity purification
<b>Conjugation</b>	Unconjugated
<b>Buffer</b>	PBS with 0.05% NaN <sub>3</sub> and 40% Glycerol, pH7.4

### Applications Recommended Dilution

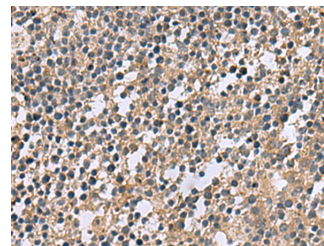
<b>WB</b>	1:1000-1:5000
<b>IHC</b>	1:50-1:200

### Data

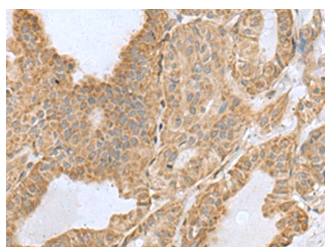


Western blot analysis of HepG2 and A549 cell lysates using CSR2 Polyclonal Antibody at dilution of 1:900

**Observed Mw: Refer to figures**  
**Calculated Mw: 21 kDa**



Immunohistochemistry of paraffin-embedded Human tonsil tissue using CSR2 Polyclonal Antibody at dilution of 1:60 (×200)



Immunohistochemistry of paraffin-embedded Human thyroid cancer tissue using CSR2 Polyclonal Antibody at dilution of 1:60 (×200)

### Preparation & Storage

#### For Research Use Only

**Storage**                      Store at -20°C. Avoid freeze / thaw cycles.

## Background

CSRP2 is a member of the CSRP family of genes, encoding a group of LIM domain proteins, which may be involved in regulatory processes important for development and cellular differentiation. CRP2 contains two copies of the cysteine-rich amino acid sequence motif (LIM) with putative zinc-binding activity, and may be involved in regulating ordered cell growth. Other genes in the family include CSRP1 and CSRP3. Alternative splicing results in multiple transcript variants.