

PRELID3B Polyclonal Antibody

Catalog No. E-AB-19156

Note: Centrifuge before opening to ensure complete recovery of vial contents.

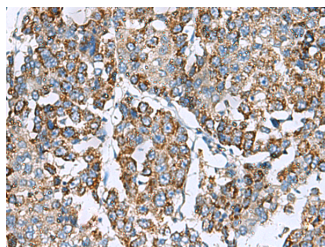
Description

| | |
|---------------------|---|
| Reactivity | Human, Mouse, Rat |
| Immunogen | Fusion protein of human PRELID3B |
| Host | Rabbit |
| Isotype | IgG |
| Purification | Antigen affinity purification |
| Conjugation | Unconjugated |
| Buffer | PBS with 0.05% NaN ₃ and 40% Glycerol, pH7.4 |

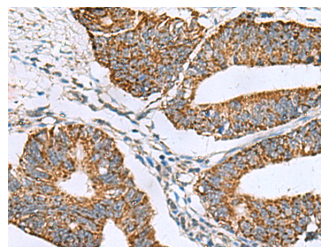
Applications Recommended Dilution

IHC 1:100-1:300

Data



Immunohistochemistry of paraffin-embedded Human liver cancer tissue using PRELID3B Polyclonal Antibody at dilution of 1:90(×200)



Immunohistochemistry of paraffin-embedded Human colorectal cancer tissue using PRELID3B Polyclonal Antibody at dilution of 1:90(×200)

Preparation & Storage

Storage Store at -20°C. Avoid freeze / thaw cycles.

Background

The function of this protein remains unknown.

For Research Use Only