

## ZDHHC3 Polyclonal Antibody

**Catalog No.** E-AB-19217

*Note:* Centrifuge before opening to ensure complete recovery of vial contents.

### Description

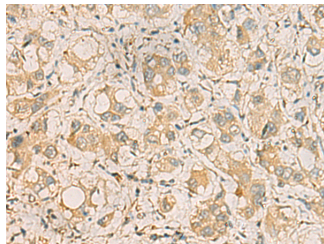
<b>Reactivity</b>	Human, Mouse
<b>Immunogen</b>	Fusion protein of human ZDHHC3
<b>Host</b>	Rabbit
<b>Isotype</b>	IgG
<b>Purification</b>	Antigen affinity purification
<b>Conjugation</b>	Unconjugated
<b>Buffer</b>	PBS with 0.05% NaN <sub>3</sub> and 40% Glycerol, pH7.4

### Applications

### Recommended Dilution

**IHC 1:50-1:100,**  
**ELISA**  
**1:5000-1:10000**

### Data



Immunohistochemistry of paraffin-embedded Human liver cancer tissue using ZDHHC3 Polyclonal Antibody at dilution of 1:35(×200)

### Preparation & Storage

**Storage** Store at -20°C. Avoid freeze / thaw cycles.

### Background

Palmitoyltransferase with broad specificity (PubMed:21926431, PubMed:23034182). Palmitoylates GABA receptors on their gamma subunit (GABRG1, GABRG2 and GABRG3), which regulates synaptic clustering and/or cell surface stability (By similarity). Palmitoylates glutamate receptors GRIA1 and GRIA2, which leads to their retention in Golgi. May also palmitoylate DLG4, DNAJC5 and SNAP25 (By similarity).

### For Research Use Only