

## RBM4 Polyclonal Antibody

Catalog No. E-AB-19255

**Note:** Centrifuge before opening to ensure complete recovery of vial contents.

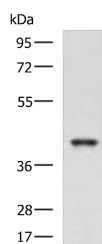
### Description

<b>Reactivity</b>	Human, Mouse
<b>Immunogen</b>	Fusion protein of human RBM4
<b>Host</b>	Rabbit
<b>Isotype</b>	IgG
<b>Purification</b>	Antigen affinity purification
<b>Conjugation</b>	Unconjugated
<b>Buffer</b>	PBS with 0.05% NaN <sub>3</sub> and 40% Glycerol,pH7.4

### Applications Recommended Dilution

**WB** 1:500-1:2000

### Data



Western blot analysis of K562 and HepG2 cell lysates using RBM4 Polyclonal Antibody at dilution of 1:750

**Observed Mw:Refer to figures**  
**Calculated Mw:40 kDa**

### Preparation & Storage

**Storage** Store at -20°C. Avoid freeze / thaw cycles.

### Background

RBM4, RNA-binding motif protein 4, contains 2 RRM-type RNA-binding motif and a retroviral-type (RT) zinc finger. RNA-binding factor participates in number of aspects of cellular processes such as alternative splicing of pre-mRNA and translation regulation. RBM4 recruits eIF4A1 to stimulate IRES-dependent translation in response to cellular stress. Once assembled at the rHRE, the HIF2A-RBM4-eIF4E2 complex captures the 5-prime cap and targets mRNAs to polysomes for active translation, thereby evading hypoxia-induced repression of protein synthesis.

### For Research Use Only