

## Phospho-NFκB-p65 (Ser529) Polyclonal Antibody

Catalog No. E-AB-20939

**Note:** Centrifuge before opening to ensure complete recovery of vial contents.

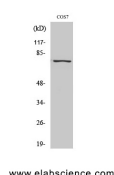
### Description

<b>Reactivity</b>	Human, Mouse, Rat, Monkey
<b>Immunogen</b>	Synthesized peptide derived from human NFκB-p65 around the phosphorylation site of Ser529
<b>Host</b>	Rabbit
<b>Isotype</b>	IgG
<b>Purification</b>	Affinity purification
<b>Conjugation</b>	Unconjugated
<b>Buffer</b>	PBS with 0.02% sodium azide, 0.5% protective protein and 50% glycerol, pH7.4

### Applications Recommended Dilution

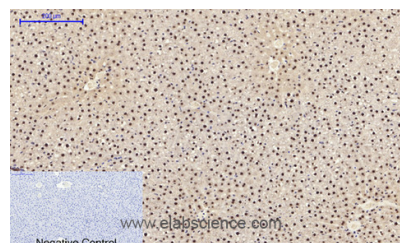
<b>WB</b>	1:500-1:2000
<b>IHC</b>	1:100-1:300
<b>IF</b>	1:50-1:200
<b>ELISA</b>	1:10000-1:20000

### Data

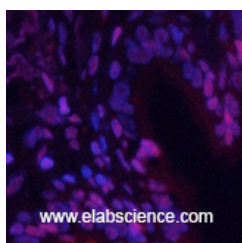


Western Blot analysis of COS7 cells with Phospho-NFκB-p65 (Ser529) Polyclonal Antibody at dilution of 1:500

**Observed Mw:60kDa**  
**Calculated Mw:60kDa**



Immunohistochemistry of paraffin-embedded Rat liver tissue with Phospho-NFκB-p65 (Ser529) Polyclonal Antibody at dilution of 1:200



Immunofluorescence analysis of Human lung tissue with Phospho-NFκB-p65 (Ser529) Polyclonal Antibody at dilution of 1:200

### For Research Use Only

## Preparation & Storage

**Storage**                      Store at -20°C. Avoid freeze / thaw cycles.

## Background

Proteins encoded by the v-Rel viral oncogene and its cellular homolog, c-Rel, are members of a family of transcription factors that include the two subunits of the transcription factor NFκB (p50 and p65) and the Drosophila maternal morphogen, dorsal. Both proteins specifically bind to DNA sequences that are the same or slight variations of the 10 bp κB sequence in the immunoglobulin κ light chain enhancer. This same sequence is also present in a number of other cellular and viral enhancers. The DNA binding activity of NFκB is activated and NFκB is subsequently transported from the cytoplasm to the nucleus in cells exposed to mitogens or growth factors. cDNAs encoding precursors for two distinct proteins of the same size have been described, designated p105 and p100. The p105 precursor contains p50 at its N-terminus and a C-terminal region that when expressed as a separate molecule, designated pDI, binds to p50 and regulates its activity.

## For Research Use Only