

LAMP3 Polyclonal Antibody

Catalog No. E-AB-19282

Note: Centrifuge before opening to ensure complete recovery of vial contents.

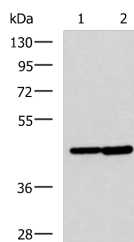
Description

Reactivity	Human
Immunogen	Synthetic peptide of human LAMP3
Host	Rabbit
Isotype	IgG
Purification	Antigen affinity purification
Conjugation	Unconjugated
Buffer	PBS with 0.05% NaN ₃ and 40% Glycerol, pH7.4

Applications Recommended Dilution

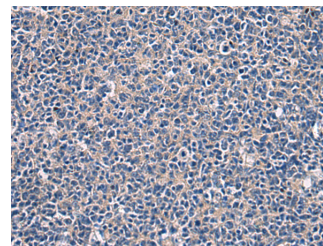
WB	1:500-1:2000
IHC	1:25-1:50

Data

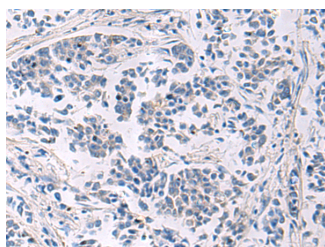


Western blot analysis of HeLa and Jurkat cell lysates using LAMP3 Polyclonal Antibody at dilution of 1:600

Observed Mw: Refer to figures
Calculated Mw: 44 kDa



Immunohistochemistry of paraffin-embedded Human tonsil tissue using LAMP3 Polyclonal Antibody at dilution of 1:30(×200)



Immunohistochemistry of paraffin-embedded Human breast cancer tissue using LAMP3 Polyclonal Antibody at dilution of 1:30(×200)

Preparation & Storage

For Research Use Only

Storage Store at -20°C. Avoid freeze / thaw cycles.

Background

Dendritic cells (DCs) are the most potent antigen-presenting cells. Immature DCs efficiently capture antigens and differentiate into interdigitating dendritic cells (IDCs) in lymphoid tissues that induce primary T-cell responses.