

MCMBP Polyclonal Antibody

Catalog No. E-AB-19295

Note: Centrifuge before opening to ensure complete recovery of vial contents.

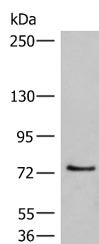
Description

Reactivity	Human, Rat
Immunogen	Synthetic peptide of human MCMBP
Host	Rabbit
Isotype	IgG
Purification	Antigen affinity purification
Conjugation	Unconjugated
Buffer	PBS with 0.05% NaN ₃ and 40% Glycerol, pH7.4

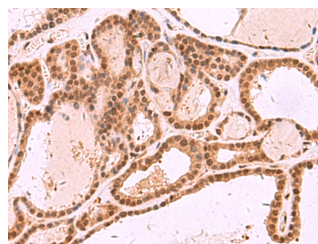
Applications Recommended Dilution

WB	1:500-1:2000
IHC	1:30-1:150

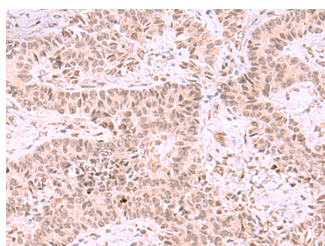
Data



Western blot analysis of 293T cell lysate using MCMBP Polyclonal Antibody at dilution of 1:800
Observed Mw: Refer to figures
Calculated Mw: 73 kDa



Immunohistochemistry of paraffin-embedded Human thyroid cancer tissue using MCMBP Polyclonal Antibody at dilution of 1:35(×200)



Immunohistochemistry of paraffin-embedded Human ovarian cancer tissue using MCMBP Polyclonal Antibody at dilution of 1:35(×200)

Preparation & Storage

Storage Store at -20°C. Avoid freeze / thaw cycles.

For Research Use Only

Background

This gene encodes a protein which is a component of the hexameric minichromosome maintenance (MCM) complex which regulates initiation and elongation of DNA. Multiple transcript variants encoding different isoforms have been found for this gene.