

ECM1 Polyclonal Antibody

Catalog No. E-AB-19389

Note: Centrifuge before opening to ensure complete recovery of vial contents.

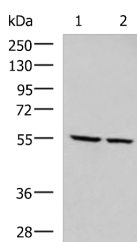
Description

Reactivity	Human
Immunogen	Synthetic peptide of human ECM1
Host	Rabbit
Isotype	IgG
Purification	Antigen affinity purification
Conjugation	Unconjugated
Buffer	PBS with 0.05% NaN ₃ and 40% Glycerol, pH7.4

Applications Recommended Dilution

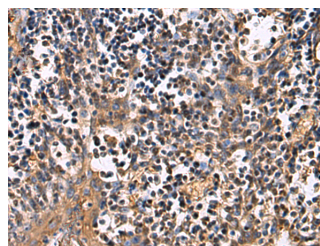
WB	1:500-1:2000
IHC	1:25-1:50

Data

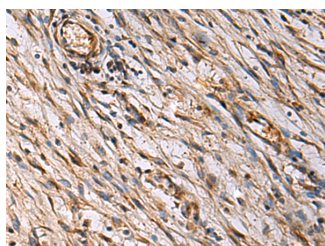


Western blot analysis of LOVO and LO2 cell lysates using ECM1 Polyclonal Antibody at dilution of 1:650

Observed Mw: Refer to figures
Calculated Mw: 61 kDa



Immunohistochemistry of paraffin-embedded Human tonsil tissue using ECM1 Polyclonal Antibody at dilution of 1:25 (×200)



Immunohistochemistry of paraffin-embedded Human colorectal cancer tissue using ECM1 Polyclonal Antibody at dilution of 1:25 (×200)

Preparation & Storage

Storage Store at -20°C. Avoid freeze / thaw cycles.

For Research Use Only

Background

Extracellular matrix protein 1 (ECM1) is a glycoprotein involved in a number of biological processes such as bone formation, skin differentiation, cell proliferation, and promotes angiostasis. Pathologically, ECM1 contributes to the formation and metastasis of several types of cancer including breast, thyroid and hepatocellular cancers. (21128013) It inhibits MMP9 proteolytic activity.