

# GNAI2 Polyclonal Antibody

Catalog Number:E-AB-19452



**Note:** Centrifuge before opening to ensure complete recovery of vial contents.

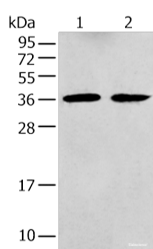
## Description

<b>Reactivity</b>	Human, Mouse, Rat
<b>Immunogen</b>	Synthetic peptide of human GNAI2
<b>Host</b>	Rabbit
<b>Isotype</b>	IgG
<b>Purification</b>	Antigen affinity purification
<b>Conjugation</b>	Unconjugated
<b>Formulation</b>	PBS with 0.05% NaN <sub>3</sub> and 40% Glycerol,pH7.4

## Applications Recommended Dilution

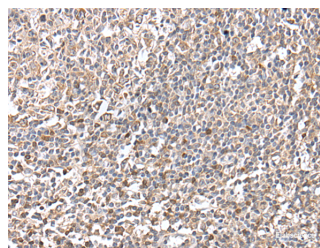
<b>WB</b>	1:500-1:2000
<b>IHC</b>	1:25-1:100
<b>ELISA</b>	1:5000-1:10000

## Data



Western blot analysis of Mouse brain tissue and Human fetal brain tissue using GNAI2 Polyclonal Antibody at dilution of 1:400

**Observed Mw:Refer to figures**  
**Calculated Mw:40 kDa**



Immunohistochemistry of paraffin-embedded Human tonsil tissue using GNAI2 Polyclonal Antibody at dilution of 1:25(×200)

## Preparation & Storage

**Storage** Store at -20°C. Avoid freeze / thaw cycles.

## Background

The protein encoded by this gene is an alpha subunit of guanine nucleotide binding proteins (G proteins). The encoded protein contains the guanine nucleotide binding site and is involved in the hormonal regulation of adenylate cyclase. Several transcript variants encoding different isoforms have been found for this gene.

## For Research Use Only

A Reliable Research Partner in Life Science and Medicine

Toll-free: 1-888-852-8623

Web: [www.elabscience.com](http://www.elabscience.com)

Tel: 1-832-243-6086

Email: [techsupport@elabscience.com](mailto:techsupport@elabscience.com)

Fax: 1-832-243-6017