

Note: Centrifuge before opening to ensure complete recovery of vial contents.

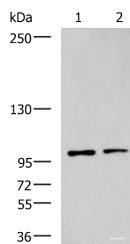
Description

Reactivity	Human, Mouse
Immunogen	Synthetic peptide of human GLI1
Host	Rabbit
Isotype	IgG
Purification	Antigen affinity purification
Conjugation	Unconjugated
Formulation	PBS with 0.05% NaN ₃ and 40% Glycerol, pH7.4

Applications Recommended Dilution

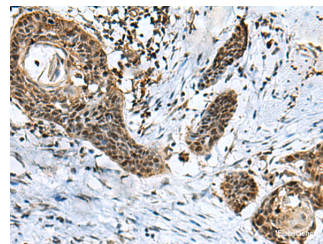
WB	1:500-1:2000
IHC	1:50-1:100
ELISA	1:5000-1:10000

Data



Western blot analysis of Raji and HepG2 cell lysates using GLI1 Polyclonal Antibody at dilution of 1:900

Observed Mw: Refer to figures
Calculated Mw: 118 kDa



Immunohistochemistry of paraffin-embedded Human esophagus cancer tissue using GLI1 Polyclonal Antibody at dilution of 1:40 (x200)

Preparation & Storage

Storage Store at -20°C. Avoid freeze / thaw cycles.

Background

GLI1 (GLI Family Zinc Finger 1) is a Protein Coding gene. Diseases associated with GLI1 include Basal Cell Carcinoma and Necrobiosis Lipoidica. Among its related pathways are Wnt Signaling Pathways: beta-Catenin-independent Wnt/Ca²⁺ Signaling and Other Non-canonical Wnt Signaling Pathways and G-Beta Gamma Signaling. GO annotations related to this gene include chromatin binding and microtubule binding. An important paralog of this gene is GLI2. This gene encodes a member of the Kruppel family of zinc finger proteins. The encoded transcription factor is activated by the sonic hedgehog signal transduction cascade and regulates stem cell proliferation. The activity and nuclear localization of this protein is negatively regulated by p53 in an inhibitory loop. Multiple transcript variants encoding different isoforms have been found for this gene.

For Research Use Only

A Reliable Research Partner in Life Science and Medicine

Toll-free: 1-888-852-8623

Web: www.elabscience.com

Tel: 1-832-243-6086

Email: techsupport@elabscience.com

Fax: 1-832-243-6017