

HOXC11 Polyclonal Antibody

Catalog Number:E-AB-19468



Note: Centrifuge before opening to ensure complete recovery of vial contents.

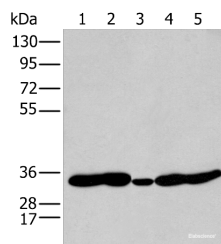
Description

Reactivity	Human, Mouse
Immunogen	Synthetic peptide of human HOXC11
Host	Rabbit
Isotype	IgG
Purification	Antigen affinity purification
Conjugation	Unconjugated
Formulation	PBS with 0.05% NaN ₃ and 40% Glycerol,pH7.4

Applications Recommended Dilution

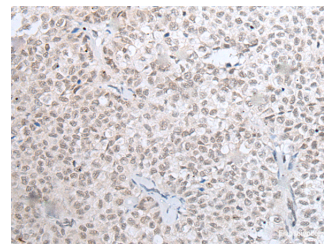
WB	1:500-1:2000
IHC	1:20-1:100
ELISA	1:5000-1:10000

Data

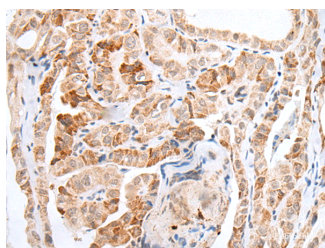


Western blot analysis of 231 Mouse heart tissue
Human fetal brain tissue Jurkat and Hepg2 cell using
HOXC11 Polyclonal Antibody at dilution of 1:250

Observed Mw:Refer to figures
Calculated Mw:34 kDa



Immunohistochemistry of paraffin-embedded
Human ovarian cancer tissue using HOXC11
Polyclonal Antibody at dilution of 1:25(×200)



Immunohistochemistry of paraffin-embedded
Human thyroid cancer tissue using HOXC11
Polyclonal Antibody at dilution of 1:25(×200)

Preparation & Storage

Storage Store at -20°C. Avoid freeze / thaw cycles.

Background

For Research Use Only

A Reliable Research Partner in Life Science and Medicine

Toll-free: 1-888-852-8623

Web: www.elabscience.com

Tel: 1-832-243-6086

Email: techsupport@elabscience.com

Fax: 1-832-243-6017

HOXC11 Polyclonal Antibody

Catalog Number: E-AB-19468



This gene is one of several homeobox HOXC genes located in a cluster on chromosome 12. The product of this gene binds to a promoter element of the lactase-phlorizin hydrolase. It also may play a role in early intestinal development. An alternatively spliced variant encoding a shorter isoform has been described but its full-length nature has not been determined.

For Research Use Only

A Reliable Research Partner in Life Science and Medicine

Toll-free: 1-888-852-8623

Tel: 1-832-243-6086

Fax: 1-832-243-6017

Web: www.elabscience.com

Email: techsupport@elabscience.com