

# Phospho-p70 S6 kinase alpha (Ser447) Polyclonal Antibody

Catalog Number:E-AB-20959



**Note:** Centrifuge before opening to ensure complete recovery of vial contents.

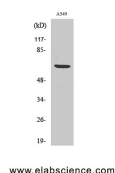
## Description

<b>Reactivity</b>	Human,Mouse,Rat
<b>Immunogen</b>	Synthesized peptide derived from human p70 S6 kinase $\alpha$ around the phosphorylation site of Ser447
<b>Host</b>	Rabbit
<b>Isotype</b>	IgG
<b>Purification</b>	Affinity purification
<b>Conjugation</b>	Unconjugated
<b>Formulation</b>	PBS with 0.02% sodium azide, 0.5% protective protein and 50% glycerol, pH7.4

## Applications Recommended Dilution

<b>WB</b>	1:500-1:2000
<b>IHC</b>	1:100-1:300
<b>ELISA</b>	1:10000

## Data



Western Blot analysis of A549 cells using Phospho-p70  
S6 kinase alpha (Ser447) Polyclonal Antibody at  
dilution of 1:1000

**Observed Mw:60kDa**  
**Calculated Mw:59kDa**

## Preparation & Storage

**Storage** Store at -20°C. Avoid freeze / thaw cycles.

## Background

P70 S6 Kinase alpha is a member of the RSK (ribosomal S6 kinase) family of serine/threonine kinases and contains 2 non-identical kinase catalytic domains. It phosphorylates several residues of the S6 ribosomal protein. The kinase activity of this protein is activated by serine/threonine phosphorylation and protein kinase C and inactivated by type 2A phosphatase. Activation leads to an increase in protein synthesis and cell proliferation. Overexpression of this kinase is involved in some breast cancer cell lines. Alternate translational start sites have been described and alternate transcriptional splice variants have been observed but have not been thoroughly characterized.

## For Research Use Only

A Reliable Research Partner in Life Science and Medicine

Toll-free: 1-888-852-8623

Web: [www.elabscience.com](http://www.elabscience.com)

Tel: 1-832-243-6086

Email: [techsupport@elabscience.com](mailto:techsupport@elabscience.com)

Fax: 1-832-243-6017