

## GKN2 Polyclonal Antibody

**Catalog No.** E-AB-19491

*Note:* Centrifuge before opening to ensure complete recovery of vial contents.

### Description

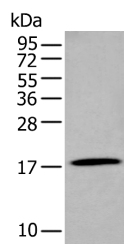
<b>Reactivity</b>	Human
<b>Immunogen</b>	Synthetic peptide of human GKN2
<b>Host</b>	Rabbit
<b>Isotype</b>	IgG
<b>Purification</b>	Antigen affinity purification
<b>Conjugation</b>	Unconjugated
<b>Buffer</b>	PBS with 0.05% NaN <sub>3</sub> and 40% Glycerol,pH7.4

### Applications

### Recommended Dilution

<b>WB</b>	1:500-1:2000
<b>ELISA</b>	1:5000-1:10000

### Data



Western blot analysis of Human stomach tissue lysate using GKN2 Polyclonal Antibody at dilution of 1:250

**Observed Mw:Refer to figures**  
**Calculated Mw:20 kDa**

### Preparation & Storage

**Storage** Store at -20°C. Avoid freeze / thaw cycles.

### Background

Gastrokine-2 is a putative gastric cancer-specific tumor suppressor gene, the loss of which is known to be involved in the development and progression of gastric cancer, and restoration of gastrokine-2 expression inhibits growth of gastric cancer cells in vitro. However, the underlying mechanism of these effects requires elucidation.

### For Research Use Only