

## CNTN1 Polyclonal Antibody

**Catalog No.** E-AB-19550

*Note:* Centrifuge before opening to ensure complete recovery of vial contents.

### Description

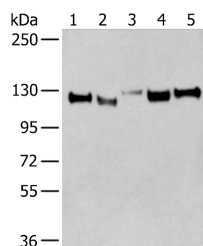
<b>Reactivity</b>	Human, Mouse, Rat
<b>Immunogen</b>	Synthetic peptide of human CNTN1
<b>Host</b>	Rabbit
<b>Isotype</b>	IgG
<b>Purification</b>	Antigen affinity purification
<b>Conjugation</b>	Unconjugated
<b>Buffer</b>	PBS with 0.05% NaN <sub>3</sub> and 40% Glycerol, pH7.4

### Applications

### Recommended Dilution

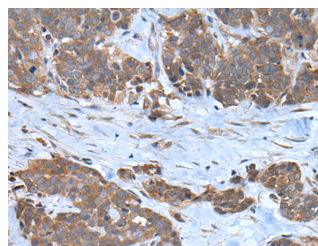
<b>WB</b>	1:500-1:2000
<b>IHC</b>	1:25-1:100

### Data

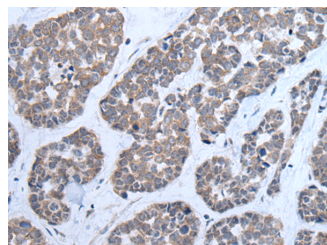


Western blot analysis of Human cerebella tissue  
Human cerebrum tissue Human fetal brain tissue  
Mouse brain tissue Rat brain tissue lysates using  
CNTN1 Polyclonal Antibody at dilution of 1:350

**Observed Mw: Refer to figures**  
**Calculated Mw: 113 kDa**



Immunohistochemistry of paraffin-embedded  
Human thyroid cancer tissue using CNTN1  
Polyclonal Antibody at dilution of 1:35(×200)



Immunohistochemistry of paraffin-embedded  
Human esophagus cancer tissue using CNTN1  
Polyclonal Antibody at dilution of 1:35(×200)

### Preparation & Storage

#### For Research Use Only

**Storage**                      Store at -20°C. Avoid freeze / thaw cycles.

## Background

The protein encoded by this gene is a member of the immunoglobulin superfamily. It is a glycosylphosphatidylinositol (GPI)-anchored neuronal membrane protein that functions as a cell adhesion molecule. It may play a role in the formation of axon connections in the developing nervous system. Multiple alternatively spliced transcript variants encoding different isoforms have been found for this gene.