

## YEATS2 Polyclonal Antibody

Catalog No. E-AB-19569

**Note:** Centrifuge before opening to ensure complete recovery of vial contents.

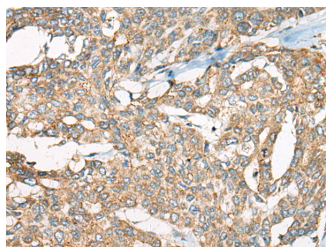
### Description

<b>Reactivity</b>	Human, Mouse
<b>Immunogen</b>	Synthetic peptide of human YEATS2
<b>Host</b>	Rabbit
<b>Isotype</b>	IgG
<b>Purification</b>	Antigen affinity purification
<b>Conjugation</b>	Unconjugated
<b>Buffer</b>	PBS with 0.05% NaN <sub>3</sub> and 40% Glycerol,pH7.4

### Applications Recommended Dilution

<b>IHC</b>	1:40-1:200
------------	------------

### Data



Immunohistochemistry of paraffin-embedded Human liver cancer tissue using YEATS2 Polyclonal Antibody at dilution of 1:55(×200)

### Preparation & Storage

**Storage** Store at -20°C. Avoid freeze / thaw cycles.

### Background

The protein encoded by this gene is a scaffolding subunit of the ATAC complex, which is a complex with acetyltransferase activity on histones H3 and H4. Alternative splicing results in multiple transcript variants encoding different isoforms. YEATS2 (YEATS Domain Containing 2) is a Protein Coding gene. Among its related pathways are Chromatin organization. GO annotations related to this gene include TBP-class protein binding. An important paralog of this gene is YEATS4.

### For Research Use Only