

Phospho-PKC zeta (Thr560) Polyclonal Antibody

Catalog No. E-AB-20970

Note: Centrifuge before opening to ensure complete recovery of vial contents.

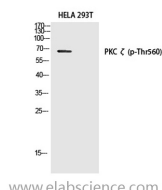
Description

Reactivity	Human, Mouse, Rat, Monkey
Immunogen	Synthesized peptide derived from human PKC ζ around the phosphorylation site of T560.
Host	Rabbit
Isotype	IgG
Purification	Affinity purification
Buffer	PBS with 0.02% sodium azide, 0.5% protective protein and 50% glycerol, pH7.4

Applications Recommended Dilution

WB	1:500-1:2000
IHC	1:100-1:300
ELISA	1:20000

Data



Western Blot analysis of Hela, 293T cells using Phospho-PKC zeta (Thr560) Polyclonal Antibody at dilution of 1:2000.

Observed Mw:80kDa
Calculated Mw:68kDa

Preparation & Storage

Storage Store at -20°C. Avoid freeze / thaw cycles.

Background

This is a calcium-independent, phospholipid-dependent, serine- and threonine-specific enzyme. Phosphorylates 'Ser-311' of RELA subunit of NF-kappa-B. PKC is activated by diacylglycerol which in turn phosphorylates a range of cellular proteins. PKC also serves as the receptor for phorbol esters, a class of tumor promoters. Subunit of a quaternary complex that plays a central role in epithelial cell polarization.

For Research Use Only