

## VAMP4 Polyclonal Antibody

**Catalog No.** E-AB-19588

**Note:** Centrifuge before opening to ensure complete recovery of vial contents.

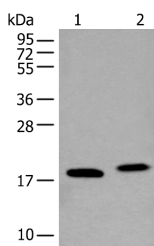
### Description

<b>Reactivity</b>	Human, Mouse
<b>Immunogen</b>	Synthetic peptide of human VAMP4
<b>Host</b>	Rabbit
<b>Isotype</b>	IgG
<b>Purification</b>	Antigen affinity purification
<b>Conjugation</b>	Unconjugated
<b>Buffer</b>	PBS with 0.05% NaN <sub>3</sub> and 40% Glycerol,pH7.4

### Applications Recommended Dilution

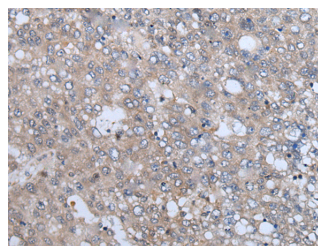
<b>WB</b>	1:500-1:2000
<b>IHC</b>	1:40-1:200

### Data



Western blot analysis of K562 cell and Mouse brain tissue lysates using VAMP4 Polyclonal Antibody at dilution of 1:400

**Observed Mw:Refer to figures**  
**Calculated Mw:16 kDa**



Immunohistochemistry of paraffin-embedded Human liver cancer tissue using VAMP4 Polyclonal Antibody at dilution of 1:50(×200)

### Preparation & Storage

**Storage** Store at -20°C. Avoid freeze / thaw cycles.

### Background

Synaptobrevins/VAMPs, syntaxins, and the 25-kD synaptosomal-associated protein SNAP25 are the main components of a protein complex involved in the docking and/or fusion of synaptic vesicles with the presynaptic membrane. The protein encoded by this gene is a member of the vesicle-associated membrane protein (VAMP)/synaptobrevin family. This protein may play a role in trans-Golgi network-to-endosome transport.

### For Research Use Only