

BLVRB Polyclonal Antibody

Catalog No. E-AB-19616

Note: Centrifuge before opening to ensure complete recovery of vial contents.

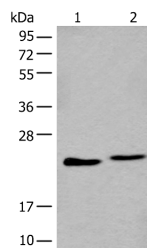
Description

Reactivity	Human, Mouse
Immunogen	Synthetic peptide of human BLVRB
Host	Rabbit
Isotype	IgG
Purification	Antigen affinity purification
Conjugation	Unconjugated
Buffer	PBS with 0.05% NaN ₃ and 40% Glycerol, pH7.4

Applications Recommended Dilution

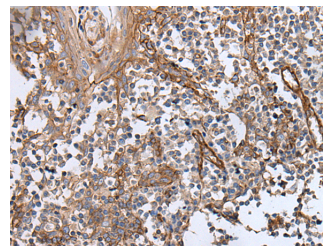
WB	1:500-1:2000
IHC	1:40-1:200

Data

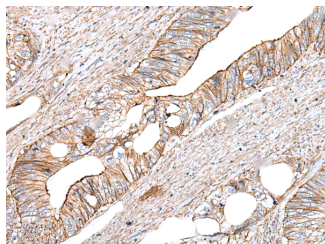


Western blot analysis of A549 and K562 cell lysate using BLVRB Polyclonal Antibody at dilution of 1:600

Observed Mw: Refer to figures
Calculated Mw: 22 kDa



Immunohistochemistry of paraffin-embedded Human tonsil tissue using BLVRB Polyclonal Antibody at dilution of 1:65(×200)



Immunohistochemistry of paraffin-embedded Human colorectal cancer tissue using BLVRB Polyclonal Antibody at dilution of 1:65(×200)

Preparation & Storage

For Research Use Only

Storage Store at -20°C. Avoid freeze / thaw cycles.

Background

The final step in heme metabolism in mammals is catalyzed by the cytosolic biliverdin reductase enzymes A and B (EC 1.3.1.24).