

## EMC7 Polyclonal Antibody

**Catalog No.** E-AB-19637

*Note:* Centrifuge before opening to ensure complete recovery of vial contents.

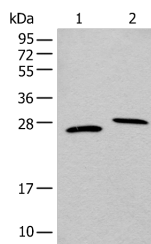
### Description

<b>Reactivity</b>	Human, Mouse
<b>Immunogen</b>	Synthetic peptide of human EMC7
<b>Host</b>	Rabbit
<b>Isotype</b>	IgG
<b>Purification</b>	Antigen affinity purification
<b>Conjugation</b>	Unconjugated
<b>Buffer</b>	PBS with 0.05% NaN <sub>3</sub> and 40% Glycerol, pH7.4

### Applications Recommended Dilution

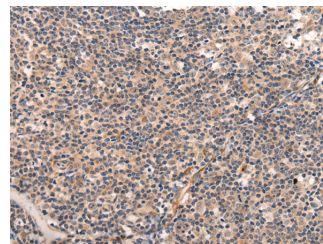
**WB 1:500-1:2000,**  
**IHC 1:30-1:150,**  
**ELISA**  
**1:5000-1:10000**

### Data



Western blot analysis of Human testis tissue and A549 cell lysates using EMC7 Polyclonal Antibody at dilution of 1:400

**Observed Mw: Refer to figures**  
**Calculated Mw: 26 kDa**



Immunohistochemistry of paraffin-embedded Human tonsil tissue using EMC7 Polyclonal Antibody at dilution of 1:40 (×200)

### Preparation & Storage

**Storage** Store at -20°C. Avoid freeze / thaw cycles.

### Background

EMC7 (ER Membrane Protein Complex Subunit 7) is a Protein Coding gene. Gene Ontology (GO) annotations related to this gene include carbohydrate binding.

### For Research Use Only