

## LDAH Polyclonal Antibody

Catalog No. E-AB-19643

**Note:** Centrifuge before opening to ensure complete recovery of vial contents.

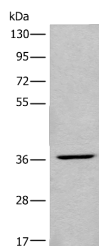
### Description

<b>Reactivity</b>	Human
<b>Immunogen</b>	Synthetic peptide of human LDAH
<b>Host</b>	Rabbit
<b>Isotype</b>	IgG
<b>Purification</b>	Antigen affinity purification
<b>Conjugation</b>	Unconjugated
<b>Buffer</b>	PBS with 0.05% NaN <sub>3</sub> and 40% Glycerol, pH7.4

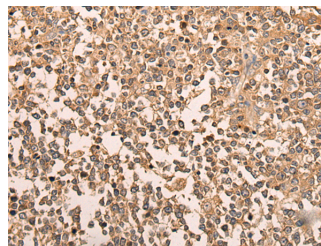
### Applications Recommended Dilution

<b>WB</b>	1:500-1:2000
<b>IHC</b>	1:50-1:300

### Data



Western blot analysis of HEPG2 cell lysate using LDAH Polyclonal Antibody at dilution of 1:650  
**Observed Mw: Refer to figures**  
**Calculated Mw: 37 kDa**



Immunohistochemistry of paraffin-embedded Human tonsil tissue using LDAH Polyclonal Antibody at dilution of 1:70 (×200)

### Preparation & Storage

**Storage** Store at -20°C. Avoid freeze / thaw cycles.

### Background

Serine lipid hydrolase associated with lipid droplets. Highly expressed in macrophage-rich areas in atherosclerotic lesions, suggesting that it could promote cholesterol ester turnover in macrophages.

### For Research Use Only