

## CAPN15 Polyclonal Antibody

Catalog No. E-AB-19658

**Note:** Centrifuge before opening to ensure complete recovery of vial contents.

### Description

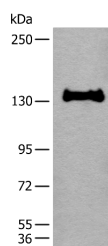
<b>Reactivity</b>	Human, Mouse
<b>Immunogen</b>	Synthetic peptide of human CAPN15
<b>Host</b>	Rabbit
<b>Isotype</b>	IgG
<b>Purification</b>	Antigen affinity purification
<b>Conjugation</b>	Unconjugated
<b>Buffer</b>	PBS with 0.05% NaN <sub>3</sub> and 40% Glycerol, pH7.4

### Applications

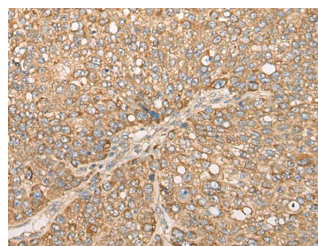
### Recommended Dilution

<b>WB</b>	1:500-1:2000
<b>IHC</b>	1:40-1:200

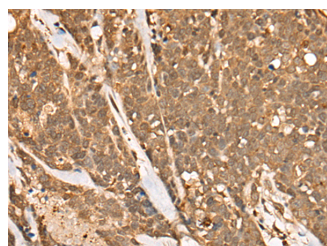
### Data



Western blot analysis of 231 cell lysate using CAPN15 Polyclonal Antibody at dilution of 1:450  
**Observed Mw: Refer to figures**  
**Calculated Mw: 117 kDa**



Immunohistochemistry of paraffin-embedded Human liver cancer tissue using CAPN15 Polyclonal Antibody at dilution of 1:50 (x200)



Immunohistochemistry of paraffin-embedded Human thyroid cancer tissue using CAPN15 Polyclonal Antibody at dilution of 1:50 (x200)

### Preparation & Storage

**Storage** Store at -20°C. Avoid freeze / thaw cycles.

### For Research Use Only

## Background

This gene encodes a protein containing zinc-finger-like repeats and a calpain-like protease domain. The encoded protein may function as a transcription factor, RNA-binding protein, or in protein-protein interactions during visual system development.