

CCDC85C Polyclonal Antibody

Catalog No. E-AB-19670

Note: Centrifuge before opening to ensure complete recovery of vial contents.

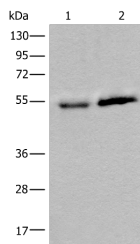
Description

Reactivity	Human, Mouse
Immunogen	Synthetic peptide of human CCDC85C
Host	Rabbit
Isotype	IgG
Purification	Antigen affinity purification
Conjugation	Unconjugated
Buffer	PBS with 0.05% NaN ₃ and 40% Glycerol, pH7.4

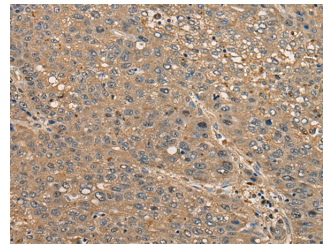
Applications Recommended Dilution

WB	1:500-1:2000
IHC	1:30-1:150

Data



Western blot analysis of Human fetal intestines tissue and Human breast cancer tissue lysates using CCDC85C Polyclonal Antibody at dilution of 1:400
Observed Mw: Refer to figures
Calculated Mw: 45 kDa



Immunohistochemistry of paraffin-embedded Human liver cancer tissue using CCDC85C Polyclonal Antibody at dilution of 1:30(×200)

Preparation & Storage

Storage Store at -20°C. Avoid freeze / thaw cycles.

Background

CCDC85C may play an important role in cortical development, especially in the maintenance of radial glia.

For Research Use Only