

CDKL2 Polyclonal Antibody

Catalog No. E-AB-19684

Note: Centrifuge before opening to ensure complete recovery of vial contents.

Description

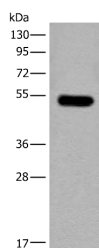
Reactivity	Human, Mouse, Rat
Immunogen	Synthetic peptide of human CDKL2
Host	Rabbit
Isotype	IgG
Purification	Antigen affinity purification
Conjugation	Unconjugated
Buffer	PBS with 0.05% NaN ₃ and 40% Glycerol, pH7.4

Applications

Recommended Dilution

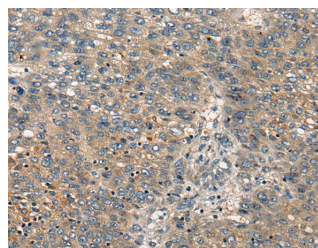
WB	1:500-1:2000
IHC	1:25-1:100

Data

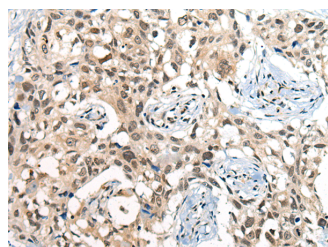


Western blot analysis of Mouse brain tissue lysate using CDKL2 Polyclonal Antibody at dilution of 1:250

Observed Mw: Refer to figures
Calculated Mw: 56 kDa



Immunohistochemistry of paraffin-embedded Human liver cancer tissue using CDKL2 Polyclonal Antibody at dilution of 1:25 (x200)



Immunohistochemistry of paraffin-embedded Human lung cancer tissue using CDKL2 Polyclonal Antibody at dilution of 1:25 (x200)

Preparation & Storage

For Research Use Only

Storage Store at -20°C. Avoid freeze / thaw cycles.

Background

This gene product is a member of a large family of CDC2-related serine/threonine protein kinases. It accumulates primarily in the cytoplasm, with lower levels in the nucleus.