

CHST2 Polyclonal Antibody

Catalog No. E-AB-19703

Note: Centrifuge before opening to ensure complete recovery of vial contents.

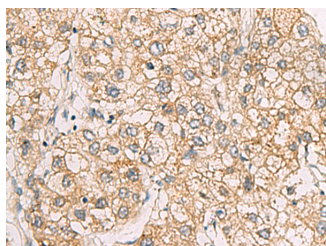
Description

Reactivity	Human, Mouse
Immunogen	Synthetic peptide of human CHST2
Host	Rabbit
Isotype	IgG
Purification	Antigen affinity purification
Conjugation	Unconjugated
Buffer	PBS with 0.05% NaN ₃ and 40% Glycerol, pH7.4

Applications Recommended Dilution

IHC	1:50-1:100
ELISA	1:5000-1:10000

Data



Immunohistochemistry of paraffin-embedded Human liver cancer tissue using CHST2 Polyclonal Antibody at dilution of 1:30(×200)

Preparation & Storage

Storage Store at -20°C. Avoid freeze / thaw cycles.

Background

This locus encodes a sulfotransferase protein. The encoded enzyme catalyzes the sulfation of a nonreducing N-acetylglucosamine residue, and may play a role in biosynthesis of 6-sulfosialyl Lewis X antigen. CHST2 (Carbohydrate Sulfotransferase 2) is a Protein Coding gene. Among its related pathways are Keratan sulfate/keratin metabolism and Glycosaminoglycan metabolism. GO annotations related to this gene include sulfotransferase activity and N-acetylglucosamine 6-O-sulfotransferase activity. An important paralog of this gene is CHST7.

For Research Use Only