

## CHST3 Polyclonal Antibody

**Catalog No.** E-AB-19704

*Note:* Centrifuge before opening to ensure complete recovery of vial contents.

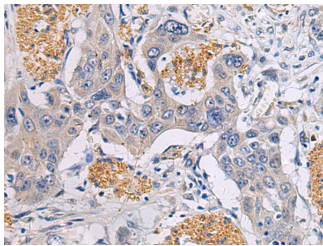
### Description

|                     |   |
|---------------------|---|
| <b>Reactivity</b>   | Human, Mouse, Rat                                       |
| <b>Immunogen</b>    | Synthetic peptide of human CHST3                        |
| <b>Host</b>         | Rabbit  |
| <b>Isotype</b>      | IgG   |
| <b>Purification</b> | Antigen affinity purification                           |
| <b>Conjugation</b>  | Unconjugated  |
| <b>Buffer</b>       | PBS with 0.05% NaN <sub>3</sub> and 40% Glycerol, pH7.4 |

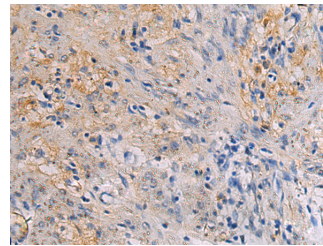
### Applications Recommended Dilution

|            |            |
|------------|------------|
| <b>IHC</b> | 1:50-1:100 |
|------------|------------|

### Data



Immunohistochemistry of paraffin-embedded Human esophagus cancer tissue using CHST3 Polyclonal Antibody at dilution of 1:30(×200)



Immunohistochemistry of paraffin-embedded Human gastric cancer tissue using CHST3 Polyclonal Antibody at dilution of 1:30(×200)

### Preparation & Storage

**Storage** Store at -20°C. Avoid freeze / thaw cycles.

### Background

This gene encodes an enzyme which catalyzes the sulfation of chondroitin, a proteoglycan found in the extracellular matrix and most cells which is involved in cell migration and differentiation. Mutations in this gene are associated with spondylepiphyseal dysplasia and humerospinal dysostosis.

### For Research Use Only