

## Phospho-STAT6 (Tyr641) Polyclonal Antibody

**Catalog No.** E-AB-20986

*Note:* Centrifuge before opening to ensure complete recovery of vial contents.

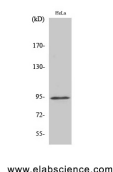
### Description

<b>Reactivity</b>	Human,Mouse,Rat
<b>Immunogen</b>	Synthesized peptide derived from human Stat6 around the phosphorylation site of Tyr641
<b>Host</b>	Rabbit
<b>Isotype</b>	IgG
<b>Purification</b>	Affinity purification
<b>Conjugation</b>	Unconjugated
<b>Buffer</b>	PBS with 0.02% sodium azide, 0.5% protective protein and 50% glycerol, pH7.4

### Applications Recommended Dilution

<b>WB</b>	1:500-1:2000
<b>IHC</b>	1:100-1:300

### Data



Western Blot analysis of HeLa cells with Phospho-Stat6  
(Tyr641) Polyclonal Antibody  
**Observed Mw:94kDa**  
**Calculated Mw:94kDa**

### Preparation & Storage

**Storage** Store at -20°C. Avoid freeze / thaw cycles.

### Background

Carries out a dual function: signal transduction and activation of transcription. Involved in interleukin-4 signalling.

### For Research Use Only