

Phospho-STAT6 (Tyr641) Polyclonal Antibody

Catalog Number:E-AB-20986

2 Publications



Note: Centrifuge before opening to ensure complete recovery of vial contents.

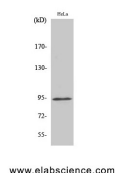
Description

Reactivity	Human,Mouse,Rat
Immunogen	Synthesized peptide derived from human Stat6 around the phosphorylation site of Tyr641
Host	Rabbit
Isotype	IgG
Purification	Affinity purification
Conjugation	Unconjugated
Formulation	PBS with 0.02% sodium azide, 0.5% protective protein and 50% glycerol, pH7.4

Applications Recommended Dilution

WB	1:500-1:2000
IHC	1:100-1:300
ELISA	1:10000

Data



Western Blot analysis of Hela cells with Phospho-Stat6
(Tyr641) Polyclonal Antibody

Observed Mw:94kDa

Calculated Mw:94kDa

Preparation & Storage

Storage Store at -20°C. Avoid freeze / thaw cycles.

Background

Carries out a dual function: signal transduction and activation of transcription. Involved in interleukin-4 signalling.

For Research Use Only

A Reliable Research Partner in Life Science and Medicine

Toll-free: 1-888-852-8623

Web: www.elabscience.com

Tel: 1-832-243-6086

Email: techsupport@elabscience.com

Fax: 1-832-243-6017