

ADGRE3 Polyclonal Antibody

Catalog No. E-AB-19802

Note: Centrifuge before opening to ensure complete recovery of vial contents.

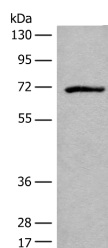
Description

| | |
|---------------------|---|
| Reactivity | Human |
| Immunogen | Synthetic peptide of human ADGRE3 |
| Host | Rabbit |
| Isotype | IgG |
| Purification | Antigen affinity purification |
| Conjugation | Unconjugated |
| Buffer | PBS with 0.05% NaN ₃ and 40% Glycerol, pH7.4 |

Applications Recommended Dilution

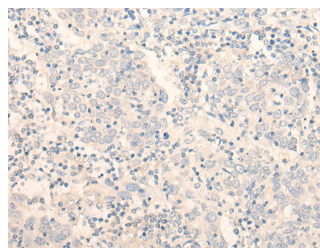
| | |
|------------|--------------|
| WB | 1:500-1:2000 |
| IHC | 1:40-1:200 |

Data

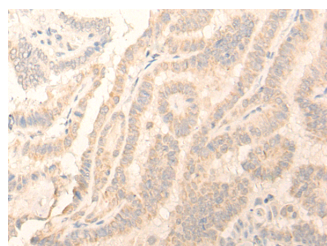


Western blot analysis of Jurkat cell lysate using ADGRE3 Polyclonal Antibody at dilution of 1:550

Observed Mw: Refer to figures
Calculated Mw: 73 kDa



Immunohistochemistry of paraffin-embedded Human cervical cancer tissue using ADGRE3 Polyclonal Antibody at dilution of 1:35 (x200)



Immunohistochemistry of paraffin-embedded Human thyroid cancer tissue using ADGRE3 Polyclonal Antibody at dilution of 1:35 (x200)

Preparation & Storage

Storage Store at -20°C. Avoid freeze / thaw cycles.

For Research Use Only

Background

This gene encodes a member of the class B seven-span transmembrane (TM7) receptor family expressed predominantly by cells of the immune system. Family members are characterized by an extended extracellular region with a variable number of N-terminal epidermal growth factor (EGF)-like domains coupled to a TM7 domain via a mucin-like spacer domain. This gene is closely linked to the gene encoding egf-like molecule containing mucin-like hormone receptor 2 on chromosome 19. This protein may play a role in myeloid-myeloid interactions during immune and inflammatory responses. Alternative splicing results in multiple transcript variants encoding different isoforms.