

## FAM84B Polyclonal Antibody

Catalog No. E-AB-19849

**Note:** Centrifuge before opening to ensure complete recovery of vial contents.

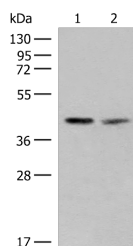
### Description

|                     |  |
|---------------------|--|
| <b>Reactivity</b>   | Human  |
| <b>Immunogen</b>    | Synthetic peptide of human FAM84B                      |
| <b>Host</b>         | Rabbit   |
| <b>Isotype</b>      | IgG  |
| <b>Purification</b> | Antigen affinity purification                          |
| <b>Conjugation</b>  | Unconjugated   |
| <b>Buffer</b>       | PBS with 0.05% NaN <sub>3</sub> and 40% Glycerol,pH7.4 |

### Applications Recommended Dilution

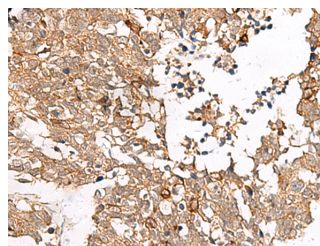
|            |              |
|------------|--------------|
| <b>WB</b>  | 1:500-1:2000 |
| <b>IHC</b> | 1:40-1:200   |

### Data

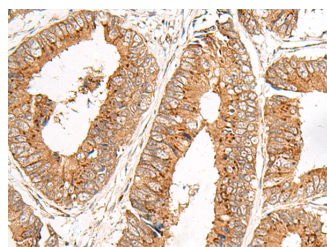


Western blot analysis of PC3 and HUVEC cell lysates using FAM84B Polyclonal Antibody at dilution of 1:400

**Observed Mw:Refer to figures**  
**Calculated Mw:34 kDa**



Immunohistochemistry of paraffin-embedded Human lung cancer tissue using FAM84B Polyclonal Antibody at dilution of 1:45(×200)



Immunohistochemistry of paraffin-embedded Human colorectal cancer tissue using FAM84B Polyclonal Antibody at dilution of 1:45(×200)

### Preparation & Storage

#### For Research Use Only

**Storage**                      Store at -20°C. Avoid freeze / thaw cycles.

## Background

FAM84B (Family With Sequence Similarity 84 Member B) is a Protein Coding gene. Diseases associated with FAM84B include Prostate Cancer Susceptibility. An important paralog of this gene is FAM84A.