

Phospho-CAMK2 alpha/beta/delta (Thr305) Polyclonal Antibody

Catalog No. E-AB-20997

Note: Centrifuge before opening to ensure complete recovery of vial contents.

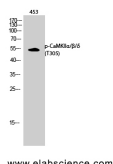
Description

Reactivity	Human, Mouse, Rat
Immunogen	Synthesized peptide derived from human CaMKII $\alpha/\beta/\delta$ around the phosphorylation site of Thr305
Host	Rabbit
Isotype	IgG
Purification	Affinity purification
Conjugation	Unconjugated
Buffer	PBS with 0.02% sodium azide, 0.5% protective protein and 50% glycerol, pH7.4

Applications Recommended Dilution

WB	1:500-1:2000
IHC	1:100-1:300
ELISA	1:5000

Data



Western Blot analysis of 453 cells using Phospho-CAMK2 alpha/beta/delta (Thr305) Polyclonal Antibody at dilution of 1:1000
Observed Mw:54kDa
Calculated Mw:54kDa

Preparation & Storage

Storage Store at -20°C. Avoid freeze / thaw cycles.

Background

CAMK2A (Calcium/Calmodulin Dependent Protein Kinase II Alpha) is a Protein Coding gene. Diseases associated with CAMK2A include Conduct Disorder. Among its related pathways are ICos-ICosL Pathway in T-Helper Cell and Development Endothelin-1/EDNRA signaling. GO annotations related to this gene include protein homodimerization activity and protein kinase activity. An important paralog of this gene is CAMK2D. CAMK2B (Calcium/Calmodulin Dependent Protein Kinase II Beta) is a Protein Coding gene. Diseases associated with CAMK2B include Phencyclidine Abuse. Among its related pathways are ICos-ICosL Pathway in T-Helper Cell and Development Endothelin-1/EDNRA

For Research Use Only

signaling. GO annotations related to this gene include protein homodimerization activity and protein kinase activity. An important paralog of this gene is CAMK2G. CAMK2D (Calcium/Calmodulin Dependent Protein Kinase II Delta) is a Protein Coding gene. Diseases associated with CAMK2D include Dilated Cardiomyopathy and Cardiomyopathy. Among its related pathways are ICos-ICosL Pathway in T-Helper Cell and Development Endothelin-1/EDNRA signaling. GO annotations related to this gene include protein homodimerization activity and protein kinase activity. An important paralog of this gene is CAMK2B.