

LGALS4 Polyclonal Antibody

Catalog No. E-AB-19890

Note: Centrifuge before opening to ensure complete recovery of vial contents.

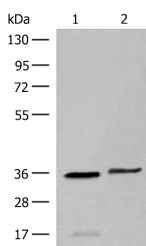
Description

Reactivity	Human
Immunogen	Synthetic peptide of human LGALS4
Host	Rabbit
Isotype	IgG
Purification	Antigen affinity purification
Conjugation	Unconjugated
Buffer	PBS with 0.05% NaN ₃ and 40% Glycerol,pH7.4

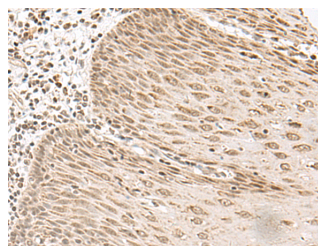
Applications Recommended Dilution

WB	1:500-1:2000
IHC	1:30-1:150

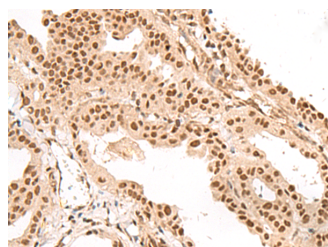
Data



Western blot analysis of Human sigmoid tissue and HT-29 cell lysates using LGALS4 Polyclonal Antibody at dilution of 1:400
Observed Mw:Refer to figures
Calculated Mw:36 kDa



Immunohistochemistry of paraffin-embedded Human esophagus cancer tissue using LGALS4 Polyclonal Antibody at dilution of 1:35(×200)



Immunohistochemistry of paraffin-embedded Human thyroid cancer tissue using LGALS4 Polyclonal Antibody at dilution of 1:35(×200)

Preparation & Storage

For Research Use Only

Storage Store at -20°C. Avoid freeze / thaw cycles.

Background

The galectins are a family of beta-galactoside-binding proteins implicated in modulating cell-cell and cell-matrix interactions. The expression of this gene is restricted to small intestine, colon, and rectum, and it is underexpressed in colorectal cancer. LGALS4 (Galectin 4) is a Protein Coding gene. Diseases associated with LGALS4 include Paraneoplastic Cerebellar Degeneration and Colorectal Cancer. Among its related pathways are Cell adhesion_Cell-matrix glycoconjugates. GO annotations related to this gene include carbohydrate binding. An important paralog of this gene is LGALS9.