

GALP Polyclonal Antibody

Catalog No. E-AB-19891

Note: Centrifuge before opening to ensure complete recovery of vial contents.

Description

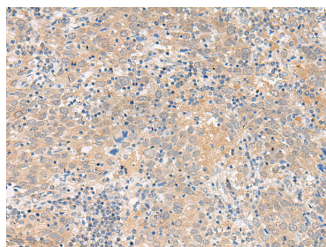
Reactivity	Human
Immunogen	Synthetic peptide of human GALP
Host	Rabbit
Isotype	IgG
Purification	Antigen affinity purification
Conjugation	Unconjugated
Buffer	PBS with 0.05% NaN ₃ and 40% Glycerol, pH7.4

Applications

Recommended Dilution

IHC	1:50-1:300
------------	------------

Data



Immunohistochemistry of paraffin-embedded Human cervical cancer tissue using GALP Polyclonal Antibody at dilution of 1:45(×200)

Preparation & Storage

Storage Store at -20°C. Avoid freeze / thaw cycles.

Background

This gene encodes a member of the galanin family of neuropeptides. The encoded protein binds galanin receptors 1, 2 and 3 with the highest affinity for galanin receptor 3 and has been implicated in biological processes involving the central nervous system including hypothalamic regulation of metabolism and reproduction. A peptide encoded by a splice variant of this gene, termed alarin, has vasoactive properties, displays antimicrobial activity against E. coli, and may serve as a marker for neuroblastic tumors.

For Research Use Only