

GPR1 Polyclonal Antibody

Catalog No. E-AB-19926

Note: Centrifuge before opening to ensure complete recovery of vial contents.

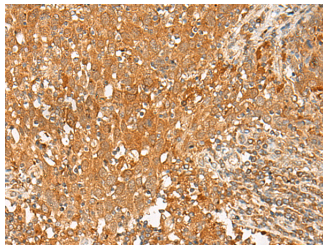
Description

| | |
|---------------------|--------------------------------------------------------|
| Reactivity | Human |
| Immunogen | Synthetic peptide of human GPR1 |
| Host | Rabbit |
| Isotype | IgG |
| Purification | Antigen affinity purification |
| Conjugation | Unconjugated |
| Buffer | PBS with 0.05% NaN ₃ and 40% Glycerol,pH7.4 |

Applications Recommended Dilution

| | |
|------------|------------|
| IHC | 1:50-1:300 |
|------------|------------|

Data



Immunohistochemistry of paraffin-embedded Human cervical cancer tissue using GPR1 Polyclonal Antibody at dilution of 1:50(×200)

Preparation & Storage

Storage Store at -20°C. Avoid freeze / thaw cycles.

Background

Receptor for the inflammation-associated leukocyte chemoattractant chemerin/RARRES2 suggesting a role for this receptor in the regulation of inflammation. Can act as a coreceptor for HIV-1.

For Research Use Only