

GPR62 Polyclonal Antibody

Catalog No. E-AB-19943

Note: Centrifuge before opening to ensure complete recovery of vial contents.

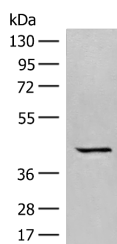
Description

Reactivity	Human
Immunogen	Synthetic peptide of human GPR62
Host	Rabbit
Isotype	IgG
Purification	Antigen affinity purification
Conjugation	Unconjugated
Buffer	PBS with 0.05% NaN ₃ and 40% Glycerol,pH7.4

Applications Recommended Dilution

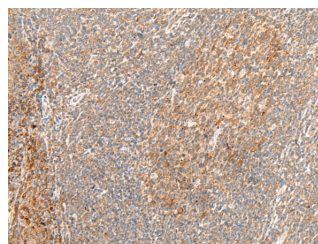
WB	1:500-1:2000
IHC	1:40-1:200

Data



Western blot analysis of A549 cell lysate using GPR62 Polyclonal Antibody at dilution of 1:350

Observed Mw:Refer to figures
Calculated Mw:38 kDa



Immunohistochemistry of paraffin-embedded Human tonsil tissue using GPR62 Polyclonal Antibody at dilution of 1:40(×200)

Preparation & Storage

Storage Store at -20°C. Avoid freeze / thaw cycles.

Background

GPR62 (G Protein-Coupled Receptor 62) is a Protein Coding gene. Among its related pathways are GPCRs, Other. GO annotations related to this gene include G-protein coupled receptor activity. An important paralog of this gene is GPR61.

For Research Use Only