

## GPR83 Polyclonal Antibody

Catalog No. E-AB-19959

**Note:** Centrifuge before opening to ensure complete recovery of vial contents.

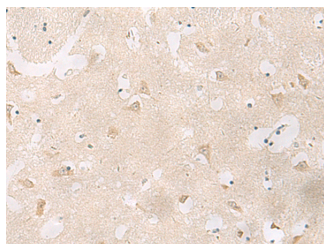
### Description

<b>Reactivity</b>	Human, Mouse
<b>Immunogen</b>	Synthetic peptide of human GPR83
<b>Host</b>	Rabbit
<b>Isotype</b>	IgG
<b>Purification</b>	Antigen affinity purification
<b>Conjugation</b>	Unconjugated
<b>Buffer</b>	PBS with 0.05% NaN <sub>3</sub> and 40% Glycerol,pH7.4

### Applications Recommended Dilution

**IHC** 1:50-1:300

### Data



Immunohistochemistry of paraffin-embedded Human brain tissue using GPR83 Polyclonal Antibody at dilution of 1:60(×200)

### Preparation & Storage

**Storage** Store at -20°C. Avoid freeze / thaw cycles.

### Background

GPR83 (G Protein-Coupled Receptor 83) is a Protein Coding gene. Among its related pathways are Signaling by GPCR and Peptide ligand-binding receptors. Gene Ontology (GO) annotations related to this gene include G-protein coupled receptor activity and neuropeptide Y receptor activity. An important paralog of this gene is TACR1.

### For Research Use Only