

PHF2 Polyclonal Antibody

Catalog No. E-AB-19963

Note: Centrifuge before opening to ensure complete recovery of vial contents.

Description

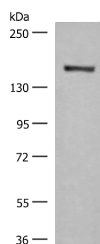
Reactivity	Human, Mouse
Immunogen	Synthetic peptide of human PHF2
Host	Rabbit
Isotype	IgG
Purification	Antigen affinity purification
Conjugation	Unconjugated
Buffer	PBS with 0.05% NaN ₃ and 40% Glycerol, pH7.4

Applications

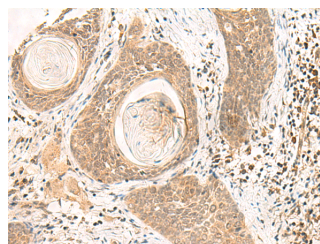
**WB 1:500-1:2000,
IHC 1:40-1:200,
ELISA
1:5000-1:10000**

Recommended Dilution

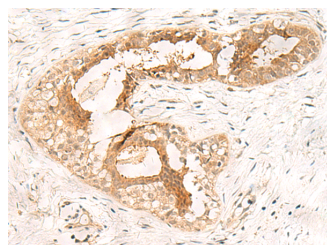
Data



Western blot analysis of NIH/3T3 cell lysate using PHF2 Polyclonal Antibody at dilution of 1:500
Observed Mw: Refer to figures
Calculated Mw: 121 kDa



Immunohistochemistry of paraffin-embedded Human esophagus cancer tissue using PHF2 Polyclonal Antibody at dilution of 1:40 (x200)



Immunohistochemistry of paraffin-embedded Human breast cancer tissue using PHF2 Polyclonal Antibody at dilution of 1:40 (x200)

Preparation & Storage

For Research Use Only

Storage Store at -20°C. Avoid freeze / thaw cycles.

Background

This gene encodes a protein which contains a zinc finger-like PHD (plant homeodomain) finger, distinct from other classes of zinc finger motifs, and a hydrophobic and highly conserved domain. The PHD finger shows the typical Cys4-His-Cys3 arrangement. PHD finger genes are thought to belong to a diverse group of transcriptional regulators possibly affecting eukaryotic gene expression by influencing chromatin structure.