

## GRSF1 Polyclonal Antibody

**Catalog No.** E-AB-19970

*Note:* Centrifuge before opening to ensure complete recovery of vial contents.

### Description

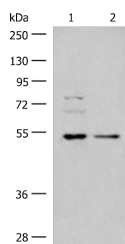
<b>Reactivity</b>	Human, Mouse
<b>Immunogen</b>	Synthetic peptide of human GRSF1
<b>Host</b>	Rabbit
<b>Isotype</b>	IgG
<b>Purification</b>	Antigen affinity purification
<b>Conjugation</b>	Unconjugated
<b>Buffer</b>	PBS with 0.05% NaN <sub>3</sub> and 40% Glycerol, pH7.4

### Applications

### Recommended Dilution

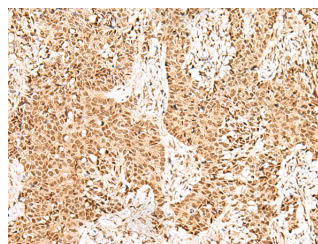
<b>WB</b>	1:500-1:2000
<b>IHC</b>	1:30-1:150

### Data

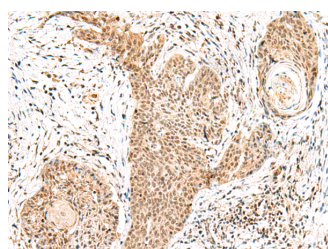


Western blot analysis of 293T and Jurkat cell lysates using GRSF1 Polyclonal Antibody at dilution of 1:300

**Observed Mw: Refer to figures**  
**Calculated Mw: 53 kDa**



Immunohistochemistry of paraffin-embedded Human ovarian cancer tissue using GRSF1 Polyclonal Antibody at dilution of 1:25(×200)



Immunohistochemistry of paraffin-embedded Human esophagus cancer tissue using GRSF1 Polyclonal Antibody at dilution of 1:25(×200)

### Preparation & Storage

#### For Research Use Only

**Storage**                      Store at -20°C. Avoid freeze / thaw cycles.

## Background

The protein encoded by this gene is a cellular protein that binds RNAs containing the G-rich element. The protein is localized in the cytoplasm, and has been shown to stimulate translation of viral mRNAs in vitro. Multiple transcript variants encoding different isoforms have been found for this gene.