

## RRP8 Polyclonal Antibody

Catalog No. E-AB-52007

**Note:** Centrifuge before opening to ensure complete recovery of vial contents.

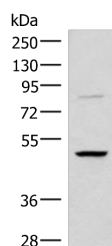
### Description

<b>Reactivity</b>	Human, Mouse, Rat
<b>Immunogen</b>	Synthetic peptide of human RRP8
<b>Host</b>	Rabbit
<b>Isotype</b>	IgG
<b>Purification</b>	Antigen affinity purification
<b>Conjugation</b>	Unconjugated
<b>Buffer</b>	PBS with 0.05% NaN <sub>3</sub> and 40% Glycerol, pH7.4

### Applications Recommended Dilution

**WB** 1:1000-1:5000

### Data



Western blot analysis of Human bladder transitional cell carcinoma grade 2-3 tissue lysate using RRP8 Polyclonal Antibody at dilution of 1:800

**Observed Mw: Refer to figures**  
**Calculated Mw: 51 kDa**

### Preparation & Storage

**Storage** Store at -20°C. Avoid freeze / thaw cycles.

### Background

RRP8 (Ribosomal RNA Processing 8, Methyltransferase, Homolog (Yeast)) is a Protein Coding gene. Diseases associated with RRP8 include Breast Abscess and Bowen-Conradi Syndrome. Among its related pathways are Activated PKN1 stimulates transcription of AR (androgen receptor) regulated genes KLK2 and KLK3 and Gene Expression. GO annotations related to this gene include poly(A) RNA binding and methylated histone binding.

### For Research Use Only