

INSM2 Polyclonal Antibody

Catalog No. E-AB-52028

Note: Centrifuge before opening to ensure complete recovery of vial contents.

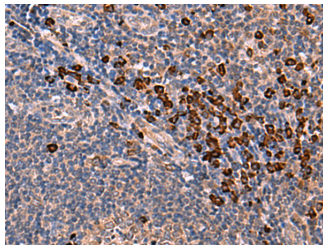
Description

Reactivity	Human
Immunogen	Synthetic peptide of human INSM2
Host	Rabbit
Isotype	IgG
Purification	Antigen affinity purification
Conjugation	Unconjugated
Buffer	PBS with 0.05% NaN ₃ and 40% Glycerol, pH7.4

Applications Recommended Dilution

IHC 1:30-1:150

Data



Immunohistochemistry of paraffin-embedded Human tonsil tissue using INSM2 Polyclonal Antibody at dilution of 1:35(×200)

Preparation & Storage

Storage Store at -20°C. Avoid freeze / thaw cycles.

Background

May function as a growth suppressor or tumor suppressor in liver cells and in certain neurons.

For Research Use Only