

## Phospho-OPRK1 (Ser369) Polyclonal Antibody

**Catalog No.** E-AB-21015

**Note:** Centrifuge before opening to ensure complete recovery of vial contents.

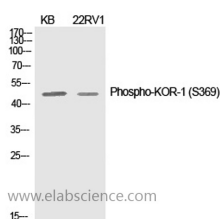
### Description

<b>Reactivity</b>	Mouse,Rat
<b>Immunogen</b>	Synthesized peptide derived from human KOR-1 around the phosphorylation site of S369.
<b>Host</b>	Rabbit
<b>Isotype</b>	IgG
<b>Purification</b>	Affinity purification
<b>Buffer</b>	PBS with 0.02% sodium azide, 0.5% protective protein and 50% glycerol, pH7.4

### Applications Recommended Dilution

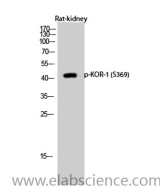
<b>WB</b>	1:500-1:2000
<b>IHC</b>	1:100-1:300
<b>ELISA</b>	1:10000

### Data



Western Blot analysis of KB, 22RV1 cells using Phospho-OPRK1 (Ser369) Polyclonal Antibody at dilution of 1:1000.

**Observed Mw:42kDa**  
**Calculated Mw:43kDa**



Western Blot analysis of Rat kidney using Phospho-OPRK1 (Ser369) Polyclonal Antibody at dilution of 1:1000.

### Preparation & Storage

**Storage** Store at -20°C. Avoid freeze / thaw cycles.

### For Research Use Only