

IPPK Polyclonal Antibody

Catalog No. E-AB-52038

Note: Centrifuge before opening to ensure complete recovery of vial contents.

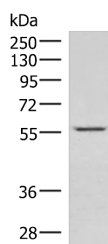
Description

Reactivity	Human, Mouse, Rat
Immunogen	Synthetic peptide of human IPPK
Host	Rabbit
Isotype	IgG
Purification	Antigen affinity purification
Conjugation	Unconjugated
Buffer	PBS with 0.05% NaN ₃ and 40% Glycerol, pH7.4

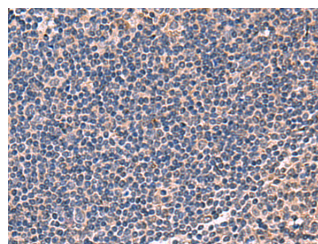
Applications Recommended Dilution

WB	1:500-1:2000
IHC	1:40-1:200

Data



Western blot analysis of Jurkat cell lysate using IPPK Polyclonal Antibody at dilution of 1:550
Observed Mw: Refer to figures
Calculated Mw: 56 kDa



Immunohistochemistry of paraffin-embedded Human tonsil tissue using IPPK Polyclonal Antibody at dilution of 1:50 (x200)

Preparation & Storage

Storage Store at -20°C. Avoid freeze / thaw cycles.

Background

The protein encoded by this gene is a kinase that phosphorylates position 2 of inositol-1,3,4,5,6-pentakisphosphate to form inositol-1,2,3,4,5,6-hexakisphosphate (InsP₆). InsP₆ has a variety of functions, including stimulation of DNA repair, endocytosis, and mRNA export.

For Research Use Only