

## ISL2 Polyclonal Antibody

**Catalog No.** E-AB-52044

*Note:* Centrifuge before opening to ensure complete recovery of vial contents.

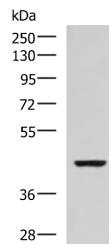
### Description

<b>Reactivity</b>	Human, Mouse, Rat
<b>Immunogen</b>	Synthetic peptide of human ISL2
<b>Host</b>	Rabbit
<b>Isotype</b>	IgG
<b>Purification</b>	Antigen affinity purification
<b>Conjugation</b>	Unconjugated
<b>Buffer</b>	PBS with 0.05% NaN <sub>3</sub> and 40% Glycerol, pH7.4

### Applications Recommended Dilution

**WB** 1:500-1:2000

### Data



Western blot analysis of SP20 cell lysate using ISL2 Polyclonal Antibody at dilution of 1:800

**Observed Mw: Refer to figures**  
**Calculated Mw: 40 kDa**

### Preparation & Storage

**Storage** Store at -20°C. Avoid freeze / thaw cycles.

### Background

ISL2 (ISL LIM Homeobox 2) is a Protein Coding gene. Among its related pathways are Neural Stem Cell Differentiation Pathways and Lineage-specific Markers. Gene Ontology (GO) annotations related to this gene include sequence-specific DNA binding. An important paralog of this gene is ISL1.

### For Research Use Only