

## ISY1-RAB43 Polyclonal Antibody

**Catalog No.** E-AB-52047

*Note:* Centrifuge before opening to ensure complete recovery of vial contents.

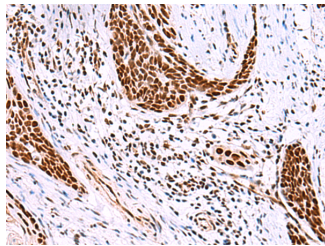
### Description

<b>Reactivity</b>	Human, Mouse, Rat
<b>Immunogen</b>	Synthetic peptide of human ISY1-RAB43
<b>Host</b>	Rabbit
<b>Isotype</b>	IgG
<b>Purification</b>	Antigen affinity purification
<b>Conjugation</b>	Unconjugated
<b>Buffer</b>	PBS with 0.05% NaN <sub>3</sub> and 40% Glycerol, pH7.4

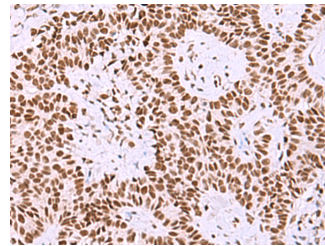
### Applications Recommended Dilution

<b>IHC</b>	1:40-1:200
------------	------------

### Data



Immunohistochemistry of paraffin-embedded Human esophagus cancer tissue using ISY1-RAB43 Polyclonal Antibody at dilution of 1:30(×200)



Immunohistochemistry of paraffin-embedded Human ovarian cancer tissue using ISY1-RAB43 Polyclonal Antibody at dilution of 1:30(×200)

### Preparation & Storage

**Storage** Store at -20°C. Avoid freeze / thaw cycles.

### Background

This locus represents naturally occurring read-through transcription between the neighboring ISY1 (ISY1 splicing factor homolog) and RAB43 (RAB43, member RAS oncogene family) gene on chromosome 3. The read-through transcript encodes a protein that shares sequence identity with the upstream gene product, but its C-terminus is distinct due to a frameshift relative to the downstream gene.

### For Research Use Only