

IFNA1/IFNA13 Polyclonal Antibody

Catalog Number:E-AB-52067



Note: Centrifuge before opening to ensure complete recovery of vial contents.

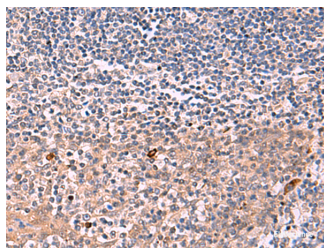
Description

Reactivity	Human
Immunogen	Synthetic peptide of human IFNA1/IFNA13
Host	Rabbit
Isotype	IgG
Purification	Antigen affinity purification
Conjugation	Unconjugated
Formulation	PBS with 0.05% NaN ₃ and 40% Glycerol,pH7.4

Applications Recommended Dilution

IHC	1:30-1:150
ELISA	1:5000-1:10000

Data



Immunohistochemistry of paraffin-embedded Human tonsil tissue using IFNA1:IFNA13 Polyclonal Antibody at dilution of 1:35(×200)

Preparation & Storage

Storage Store at -20°C. Avoid freeze / thaw cycles.

Background

IFNA1 (interferon-alpha) is a member of the Type I IFN (1) family best known for their antiviral activity. It is a key cytokine regulating the activity of B cells,T-helper cells (Th cells),cDCs and natural killer cells (NK cells). Interferon-alpha induces B cell maturation into plasma cells and immunoglobulin production. Interferon-alpha plays an important role in the pathogenesis of systemic lupus erythematosus (SLE). Interferon-alpha was the first cytokine to show clinical benefit in the treatment of certain types of cancer,including melanoma,chronic myelogenous leukemia,and renal cancer.

For Research Use Only

A Reliable Research Partner in Life Science and Medicine

Toll-free: 1-888-852-8623

Web: www.elabscience.com

Tel: 1-832-243-6086

Email: techsupport@elabscience.com

Fax: 1-832-243-6017