

Phospho-RPS6KA1 (Ser380) Polyclonal Antibody

Catalog No. E-AB-21019

Note: Centrifuge before opening to ensure complete recovery of vial contents.

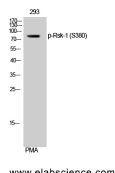
Description

Reactivity	Human,Mouse,Rat
Immunogen	Synthesized peptide derived from human Rsk-1 around the phosphorylation site of Ser380
Host	Rabbit
Isotype	IgG
Purification	Affinity purification
Conjugation	Unconjugated
Buffer	PBS with 0.02% sodium azide, 0.5% protective protein and 50% glycerol, pH7.4

Applications Recommended Dilution

WB	1:500-1:2000
IHC	1:100-1:300
ELISA	1:10000

Data



Western Blot analysis of 293T cells with Phospho-RPS6KA1 (Ser380) Polyclonal Antibody
Observed Mw:83kDa
Calculated Mw:83kDa

Preparation & Storage

Storage Store at -20°C. Avoid freeze / thaw cycles.

Background

Serine/threonine kinase that may play a role in mediating the growth-factor and stress induced activation of the transcription factor CREB.

For Research Use Only