

PUM3 Polyclonal Antibody

Catalog No. E-AB-52099

Note: Centrifuge before opening to ensure complete recovery of vial contents.

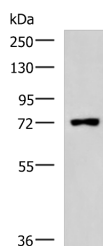
Description

Reactivity	Human
Immunogen	Synthetic peptide of human PUM3
Host	Rabbit
Isotype	IgG
Purification	Antigen affinity purification
Conjugation	Unconjugated
Buffer	PBS with 0.05% NaN ₃ and 40% Glycerol,pH7.4

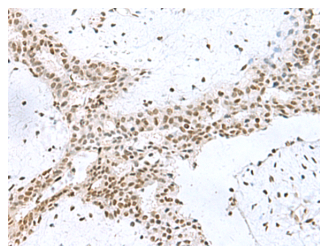
Applications Recommended Dilution

WB	1:1000-1:5000
IHC	1:50-1:200

Data



Western blot analysis of Raji cell lysate using PUM3 Polyclonal Antibody at dilution of 1:800
Observed Mw:Refer to figures
Calculated Mw:74 kDa



Immunohistochemistry of paraffin-embedded Human breast cancer tissue using PUM3 Polyclonal Antibody at dilution of 1:80(×200)

Preparation & Storage

Storage Store at -20°C. Avoid freeze / thaw cycles.

Background

Inhibits the poly(ADP-ribosyl)ation activity of PARP1 and the degradation of PARP1 by CASP3 following genotoxic stress (PubMed:21266351). Binds to double-stranded RNA or DNA without sequence specificity (PubMed:25512524). Involved in development of the eye and of primordial germ cells (By similarity).

For Research Use Only